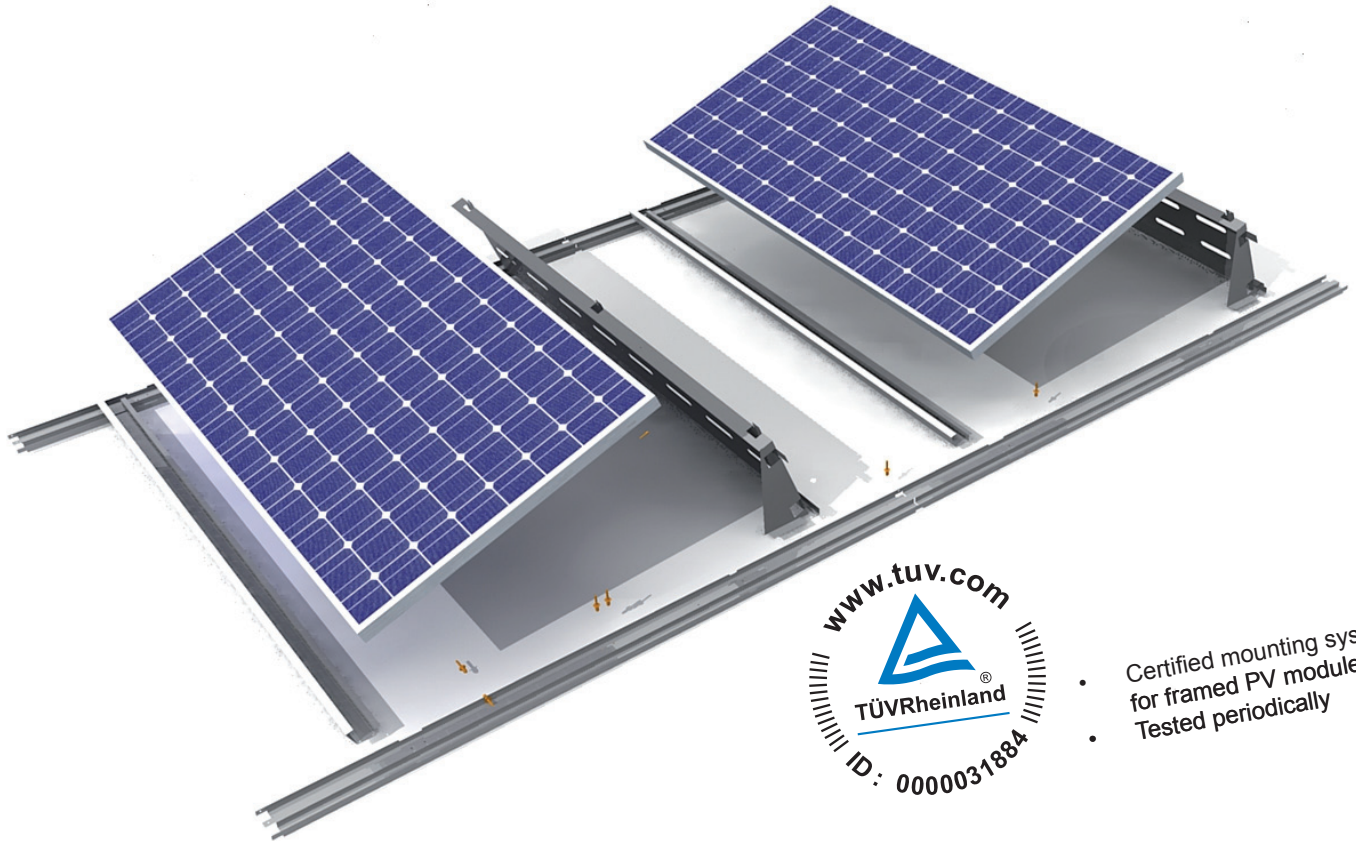


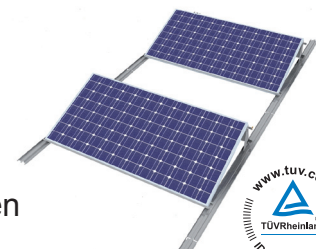
## FD-Mounting System

The innovative flat roof mounting system



- Certified mounting system for framed PV modules
- Tested periodically

- Effective utilization of the roof
- Suits foil, bitumen, pebble and trapezoidal sheet roofs
- No additional weight required
- No roof penetration
- For all framed PV modules
- Quick and cost-efficient mounting
- Resistance against forces of wind suction
- 10 year product guaranty



## FD-Mounting System - The yield-optimized solution for flat roofs

The FD-Mounting System allows a lightweight installation of framed PV modules on large-scale flat and industrial roofs. Therefore a yield-optimized and effective utilization of the roof is generated.

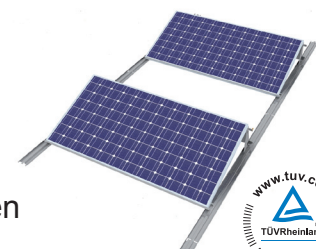
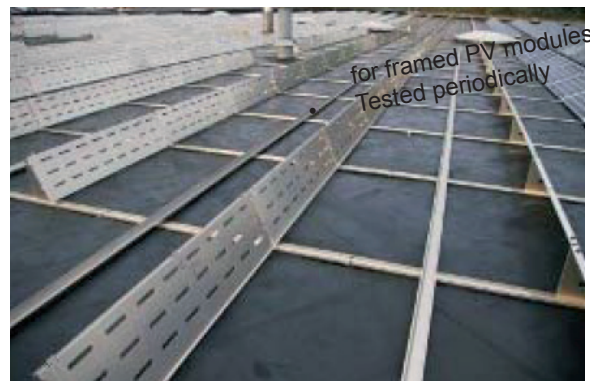
The system requires no additional weight and no roof penetration. The FD-Mounting System is resistant against forces of windsuction. It is suitable for all common types of framed PV modules. The standard version of the FD-Mounting system comes with a configuration of 15° setting angle, but it is configurable for optimum settings from 10° to 30° setting angle.

The modules are attached to the FD-Mounting System either with drilling screws or with a special clamp. The base rails come with a polyester fleece on the bottom side. The little weight of approximately 2 kg/m<sup>2</sup> makes the system suitable for a wide range of industrial and commercial buildings.

The FD-Mounting System consists of components made out of aluminium and stainless steel. Aerodynamical requirements determined the design. Therefore a minimum of weight and a maximum of stability are guaranteed for the solar power system as well as protection against corrosion damages.

Advantages:

- **Short assembly time: < 1 man-hour per kWp**
- **Modules placed in landscape mode only**
- **Little weight: ca. 2 kg/m<sup>2</sup> (without module)**
- **Even load distribution**
- **No roof penetration**
- **No modification or injury of the roof**
- **Few components and individual parts**
- **Suitable for all flat roofs up to 10° tilt angle**
- **Configurable from 10° to 30° setting angle**
- **Simulated in wind tunnel up to 40 m/sec**
- **Certified by TÜV Rheinland**
- **Easy calculation (number of modules x piece price)**



• Geprüftes  
PV Befestigungs-System  
• Regelmäßig Überwacht